

WHITIKAHU SCHOOL



PROSPECTUS
2025



Country Learning At Its Best



office@whitikahu.school.nz



07 824 4859



763 Whitikahu Road, RD2, Taupiri, 3292



www.whitikahu.school.nz

Whitikahu School is a small country school situated near Gordonton with a population that ranges from 60–80 pupils. It is approximately 20 kms North East of Hamilton and is surrounded with lush rural landscapes of the Waikato. At Whitikahu School, we value our country culture, rural heritage and inspire our learners to develop 'KAHU CARES'.





BELL TIMES

Block 1

8.55am

Morning Tea

10.20am

Block 2

10.45am

Lunch

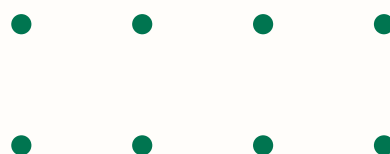
12.30pm

Block 3

1.25pm

End of Day

2.55pm





WELCOME



Kia Ora Everyone,

Welcome to Whitikahu School. My name is Brent Harper and I am the proud tumuaki of our dynamic and passionate learning community. I have had a long association with Whitikahu School and the broader community, having assumed various professional roles over a career spanning two decades. Since becoming principal in 2019, it continues to be my privilege to serve Whitikahu and to lead our special rural school, with country learning at its best.

Our school has a strong family atmosphere where students of all ages, mix and play together. There are many multigenerational families that have been a part of our school community since the school began in 1912. The essence and spirit of The Whitikahu Way and KAHU CARES has been a hallmark to the individuals that have passed through our gates.

The strength of Whitikahu School and its community, is the dedication of many stakeholders to empower and grow our students in holistic ways, so that they are equipped and enthusiastic lifelong learners. Our motivation to seeing students actualise our vision which is “to be lifelong enthusiastic learners, ready to face challenges, explore opportunities and make informed decisions about the future” is the inspiration that drives our rich and highly engaging learning programmes. Whitikahu School has an outstanding team of professionals that inspire, invigorate and motivate learners to achieve and succeed in and out of the classroom.

I hope that as you experience our special rural school you see for yourself how remarkable it is.

Warm regards,

Brent Harper

OUR HISTORY

It was around 1700 that the Maori people of Ngati Wairere first settled on the present site of Hamilton City of which was called Kirikiriroa. The rivers and streams of the Waikato were used extensively by Maori who were great travelers and explorers, navigating their waka along the waterways and occasionally resorting to travelling overland on foot. A network of tracks were formed because of this, with resting places established at suitable sites with Whitikahu being one of those sites. Whitikahu was originally swamp and marsh land, with local a legend reporting of kahu (hawks) swooping down to catch eels in the waterways. The kahu would fight over the eels that were caught in the waterways leading to our area being named by Maori as Whitikahu (the fighting hawks).

Whitikahu School opened in February 1912 with 23 pupils. There was one teacher in a single room and attendance by students was erratic as many children were needed to help out on the farms. During the first World War, the school closed several times due to teacher shortages and the effects of war. Electricity came to the school and wider community in 1922. In 1937, a second classroom was added along with a girls toilet. During this era, many students came to school on horseback and had limited play areas. During the 1940's, free milk and apples for schools were introduced by the Health Department. A major innovation at the school during this era, was the introduction of the flush toilet. In 1942, an air raid shelter was dug along the school boundary in response to World War Two. The 1950's saw an additional classroom being built onto the property, fence installations, concreting of the tennis court and construction of the swimming pool. In the 1960's, the playground area was extended, new toilets were added, another classroom was built, school camps were introduced and many children from the school attended the royal visit in Tauranga. The 50th Jubilee was also held in this era and the memorial bell was presented to the school. In the 1970's, a new classroom was added to the property and a new pool was built to replace the original pool. In the 1980's, a new library was built at the front of the school, a special 75th Jubilee celebration was held and a new playground with a high tower and flying fox was added to the property. Throughout the 1990's, the school roll fluctuated with changes in urban development in many suburbs throughout the Waikato. Boards of Trustees were introduced to support the governance of the school. Many productions and camps were held throughout the 1990's too.

In the 2000's, a multipurpose space was created from old army barracks, a new library was built, and a fourth classroom was added to the property. A new adventure playground was added to support action-based learning and school camps continued to be a hallmark of the Whitikahu School experience. The 2010's has seen fluctuations from 4-5 classrooms and the insurgence of the digital era with it's positive impacts on education.



OUR SCHOOL VALUES



COLLABORATION

AT WHITIKAHU, WE SHOW COLLABORATION BY WORKING AS A TEAM TO ACHIEVE A COMMON GOAL, INCLUDING OTHERS, ACTIVELY LISTENING, SHARING IDEAS AND RESPONDING TO DIVERSE VIEWPOINTS.



KAHU CARES



AGENCY

AT WHITIKAHU, WE ARE SELF-DIRECTED LEARNERS WHO SHOW AGENCY BY HAVING AN ACTIVE VOICE, AUTONOMY, RESPONSIBILITY AND OWNERSHIP TO CHOOSE WHAT WE WILL LEARN AND HOW WE WILL LEARN IT.



KAHU CARES



RESPECT

AT WHITIKAHU, WE SHOW RESPECT BY ACCEPTING OTHERS FOR WHO THEY ARE AND WHAT THEY BELIEVE, EMBRACING DIVERSE CULTURES, TAKING PRIDE IN OUR SCHOOL WORK, AND BY CARING FOR OUR ENVIRONMENT.



KAHU CARES



ENGAGEMENT

AT WHITIKAHU, WE SHOW ENGAGEMENT BY BEING ENTHUSIASTIC AND POSITIVE, EMBRACING ALL LEARNING EXPERIENCES, SEEING CHALLENGES AS OPPORTUNITIES TO GROW, AND DISPLAYING RESILIENCE.



KAHU CARES



SELF

AT WHITIKAHU, WE HAVE A STRONG SENSE OF SELF BY CHOOSING A GROWTH MINDSET, BELIEVING IN OUR OWN CAPABILITIES, HAVING CONFIDENCE TO TAKE RISKS, SETTING GOALS, AND THINKING CRITICALLY TO MAKE INFORMED DECISIONS.



KAHU CARES

WHITIKAHU SCHOOL



Country Learning At Its Best

Vision Statement

Our aakonga will be lifelong enthusiastic and highly motivated learners, who embrace challenges, find solutions, explore opportunities, think critically and creatively, and make informed decisions about their future.

Mission Statement

To provide 'Incredible Learning Opportunities in a Rural Landscape' by creating positive, caring, and whaanau-orientated spaces for all aakonga to thrive.

WHITIKAHU SCHOOL



Country Learning At Its Best

Strategic Goals



To enhance our quality future-focused teaching and learning approaches that equip aakonga with life-readiness and successful outcomes



To embrace future-focused learning approaches that equip aakonga with life-readiness



To nurture meaningful partnerships between BoT, whaanau, community and staff to support aakonga successes

OUR TEAM

PRINCIPAL



BRENT HARPER

DEPUTY PRINCIPAL



MARAEA TE POU

TEACHER



TRACY GASNIER

TEACHER



SARAH SMITH

TEACHER AIDE



CHERIE DO VALE

TEACHER AIDE



CLAIRE READ

TEACHER AIDE



CHERRY VAN TIEL

OFFICE ADMIN



SATBANT SINGH

OUR TEAM

PRESIDING MEMBER



RYN GOING

BOARD MEMBER



DAVE BEST

BOARD MEMBER



KERIN MCDONALD

BOARD MEMBER



MARCUS FULTON

BOARD MEMBER



SIMEON WARD

BOARD MEMBER



BRITTANY HARTSTONE

KOOHANGA

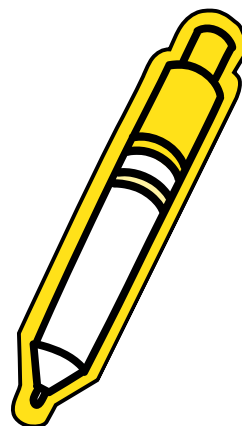
CLASSES

YEARS 0-3

In Koohanga, our wonderful Year 0-3 learners focus on developing the fundamental skills required for life-long learning. We have a balanced curriculum of learning through exploration, inquiry and teacher-led instruction (which follows evidence-based scopes and sequences for Mathematics and English). There are opportunities for our aakonga to explore their own interests and to discover new curiosities in our programme. For English, we implement iDeaL Structured Literacy which progresses students from learning about 'Phonological Awareness' to 'Alphabetic Principle' and then to 'Spelling Concepts'. iDeaL teaches students sound and letter recognition which enables them to decode (read) and encode (write). The structured programme we use for Mathematics is PRIME which similarly follows a robust scope and sequence that enables aakonga to understand and apply mathematical concepts following a Concrete-Pictorial-Abstract Approach. Many of our younger learners are experiencing success in Mathematics and English through the implementation of these evidence-based programmes.



Oral Language is an essential component of Koohanga. iDeaL Structured Literacy and learning through exploration, enables students to develop effective communication skills and learn rich vocabulary. Inquiry, PE and The Arts are also key components of our balanced and highly engaging programme.



PIIRERE

YEARS 4-5



In Piirere, we have a diverse group of energetic and kind Year 4 & 5 aakonga. We are a collaborative group who proudly show KAHU CARES. In Mathematics, we follow a structured programme called PRIME, which empowers students to build confidence in their mathematical abilities and tackle challenging 'real-life' word problems. In English, we implement iDeaL Structured Literacy, which supports learners' decode-encode-decode abilities as well as their knowledge of spelling concepts. Each year, we have 3 school-wide inquiry cycles that follow the PYP themes. During our inquiry lessons, we put KAHU CARES into action and follow our school inquiry model. Piirere learners enjoy learning more about the world around them and how it connects with their wider environment. We have a fantastic Arts and PE programme that caters for all passions and interests!

KAAHU PANGO

YEARS 6-8

The Year 6-8 Kaahu Pango 'Senior Hub' is a unique and dynamic feature of our school. At this stage in their journey at Whitikahu, many learners have built positive and long lasting friendships which sets them up for future successes. Students engage in a variety of rich learning programmes such as PRIME Mathematics, iDeaL Spelling, Inquiry, Reading Projects, The Arts and PE. Our Year 7-8 learners also go to Tech on a Friday. The learning opportunities we provide for our senior students, supports their development and preparation for High School and beyond. Our curriculum implementation is innovative with use of digital tools, hands-on learning and authentic real-life activities. Our class culture is positive and inclusive. Raising up young leaders is a core component of the 'Senior Hub' programme. Students are challenged to grow as leaders and role model KAHU CARES to their peers. There is always laughter, joy and fun in our senior class!



In the Senior Hub, aakonga are refining and nurturing their ability to be "lifelong enthusiastic and highly motivated learners, who embrace challenges, find solutions, explore opportunities, think critically and creatively, and make informed decisions about their future."

SENIOR PROGRAMME

TECHNOLOGY SPECIALIST CLASSES

Students in Years 7–8 attend 'Tech' every Friday morning from 9–11.30am at Morrinsville Intermediate. A bus leaves Whitikahu School to take students at 9am and returns them back to school at approximately 11.30am. Our senior students engage in a variety of hands-on Technology and Arts based lessons such as Food Technology, Visual Art, Hard Materials, Languages and Robotics.



Students are allowed to purchase food items from the MIS canteen before returning to Whitikahu School on a Friday morning which is a special Senior Student privilege.



SENIOR CAMP

Each year, Senior Students (Years 6–8) go on a week-long camp to develop their resilience, confidence, endurance, perseverance, life-ready skills and character. Each camp has a unique style, purpose and setup – offering a range of engaging outdoor education activities for students to experience and enjoy.

The camps we usually attend are:

- Camp Epworth
- Kawaeranga Valley
- Tui Ridge

LEADERSHIP

HOUSE LEADERS

The development and nurturing of leadership skills is one of the many aspects that distinguishes Whitikahu School. We place significant emphasis on the importance of student voice and agency. Our Senior Students are offered pathways to become House Leaders or Student Ambassadors and are supported to practice, grow and action their leadership potential. This privilege sees students run House Events, lead their peers during school-wide initiatives, organise assemblies, mentor others and run clubs at lunch times. House Leaders are often asked to support school projects and are essential in boosting peer morale whilst modeling KAHU CARES.



Each week in our assembly, we announce a winning House based on which group collected the most High 5's throughout a week. It is a fierce competition between Kauri, Totara, Kowhai and Rimu. The winning house has their flag up on our flagpole for the following week to boast victory!

LEADERSHIP TRAINING



To further enhance the abilities and skills of our student leaders, we take them to GRIP Student Leadership Conference. We also provide team-building training days for our student leaders.

The GRIP Student Leadership Conference is a unique event that concentrates specifically on training student leaders for their role as school leaders. The style, topics, and content in the conference focus on what students can do to make an impact and leave a legacy.

OUR LOCAL CURRICULUM

ENGLISH

iDeal Structured Literacy is the main evidence-based programme we implement at Whitikahu School from Years 0–8. At the junior years, the focus is on phonological awareness and alphabetic principle. In the middle and senior years, the focus is on progressing aakonga through Stages 1–4 by learning the 40 Spelling Concepts (phonemes) for multisyllable words. Students practise decode–encode–decode, morphology, dictation, irregular words and unpacking the different parts of words. iDeal is used to support our Spelling, Guided Reading and Writing programmes. Each class incorporates Shared and Independent Reading throughout their programmes. Our Writing programme focuses on targeted workshops, skills development and genre focuses. In 2025, our school-wide focus will be on implementing the evidence-based approaches and research of Murray Gadd. A variety of digital tools and Apps are used to enhance the delivery and engagement of our English learning programmes.



OUR LOCAL CURRICULUM

MATHEMATICS

PR1ME Mathematics is the main evidence-based programme we implement at Whitikahu School from Years 0–8. PR1ME is based on a composite of approaches that are used by the top-performing nations and is based on Singapore Maths used by over 58 nations globally. The programme follows a scope and sequence that begins at Book K and progresses up to Book 6. PR1ME follows a Concrete–Pictorial–Abstract Approach that empowers students to grasp concepts at a deep level. It covers all mathematical strands and aligns perfectly with the New Zealand Curriculum. A variety of digital tools and Apps are also used to enhance our Mathematics learning programmes.



OUR LOCAL CURRICULUM

INQUIRY

At Whitikahu School, we follow an inquiry process called 'Flight'. Flight is a learning journey metaphor and shared language of learning, closely mirroring SOLO Taxonomy and Kath Murdoch's Cycle of Inquiry.

The language of learning associated with Flight is a transferrable tool that makes all learning processes visible for staff, students and whanau. It provides a consistent approach to what learning can look like in all Whitikahu School classrooms and is a process that enables students to understand and take ownership over their own learning journey. Flight provides visual and verbal prompts to support learners to be able to answer:

- Where am I at in my learning journey?
- Where am I going next?
- How will I get there?
- Who and/or what can help me?

Whitikahu School has chosen 'Flight' as the metaphor for the learning journey that students and teachers embark on. Learners harness a spirit of adventure and the motivation of a hawk to soar as high as they can before reaching their destination.

The stages of Flight are Take Off, Ascend, Soar and Land. At the Take Off stage, students are engaged in experiences that hook them into new learning and capture their wonderings. In the Ascend stage, students are drawing from and building onto their prior knowledge about a particular focus, Big Question or Big Idea. Students then move on to constructing new meaning in the Ascend stage. Finally, at the Land stage of the Flight learning journey, students apply their new understanding and knowledge from a focus, Big Question or Big idea to take action and reflect.



FLIGHT

Learning Journey



TAKE OFF

LAUNCHING INTO
FLIGHT AND
GENERATING LIFT



ASCEND

FLAPPING WINGS TO GAIN MORE LIFT,
DEFY GRAVITY AND INCREASE ALTITUDE



SOAR

ADJUSTING POSITIONING
AND MOVEMENTS TO
CONTROL DIRECTION AND
MAINTAIN STABILITY



LAND

CHANGING SPEED, POSITIONING
AND ORIENTATION TO TOUCHDOWN
ON THE LANDING SPOT



FLIGHT

Learning Journey



OUR LOCAL CURRICULUM

HEALTH & PE

We cover a variety of Health & Physical Education units throughout the year such as Swimming Sports, Athletics, Cross Country, Touch, Cricket, Soccer, Basketball and other large/small ball skills. A variety of external providers and specialists come onsite to our school throughout the year to run sport development workshops for our tamariki. Aakonga are taken on a number of EOTC excursions and sport-related trips such as Junior Tough Guy & Gal Challenge, Weet-Bix TRYathlon, Round the Bridges, tournaments, EWCS events and hikes.

STEAM & MAKER EDUCATION

STEAM and Maker Education is an educational approach to learning that uses Science, Technology, Engineering, the Arts and Mathematics as access points for guiding student inquiry, dialogue, and critical thinking. Learners develop skills to think outside the box, express innovative and creative ideas, feel comfortable doing hands-on learning, take ownership over their learning, work collaboratively with others, understand the ways that science, maths, the arts, and technology work together and become increasingly curious about the world around them and feel empowered to change it for the better.

We aim to run a school production every 2-3 years that empowers our learners to focus on the core elements of drama and dance.

MAAORI & KAPA HAKA

Every Friday, our aakonga learn waiata, chants and performances as part of our Kapa Haka programme. Kapa Haka is an effective method for teaching tikanga Maaori, including poowhiri, karakia and whaikoorero. It also teaches aakonga Maaori social values such as whanaungatanga, manaakitanga and aroha, along with life skills such as commitment and discipline. Teachers integrate Tikanga Maaori, Te Ao Maaori and Te Reo Maaori throughout their weekly learning programmes.

KEY INFO

SCHOOL HOURS

8.55am – Block 1 begins
10.20am – Morning Tea
10.45am – Block 2 begins
12.30pm – Lunch
1.25pm – Block 3 begins
2.55pm – School finishes

If any changes are made to the school times, parents will be notified via the newsletter, School App, FB or email.



ABSENCES

Parents are required to inform school of any absenteeism their child may have (as per our School Policy) by either emailing or phoning the office. Absences can also be entered via the School App.

PTA

The Parent Teacher Association (PTA) consists of parent volunteers who along with our professional team and Board of Trustees, work together to fundraise and provide the best environment, equipment, experiences and facilities for our tamariki to learn. The PTA always welcome new volunteers to join the team as they run many initiatives throughout the year. This is a great way to become more involved in the life of our school. Meetings are held monthly and everyone is welcome to attend.

KEY INFO

SCHOOL BUS

Some of our students are eligible to travel to and from school by bus. Students are expected to show KAHU CARES and the Whitikahu Way when travelling on the bus.

Our Bust Route

- Curtailment of Tenfoot Rd from 372 Tenfoot Rd to 272 Tenfoot Rd
- Curtailment of Orini Rd to Whitikahu Rd
- Curtail Seifert Rd back to Whitikahu School

Eligible, and current, students who are impacted by these route curtailments can continue to make their way to the closest bus stop on this bus route.

Eligible students who travel 2.4km or further to the bus route (or school, whichever is closest) may be eligible for a Conveyance Allowance.

When there is an increase in eligible students within our transport entitlement zone (TEZ), our bus run will be extended.

Our bus service provider, Go Bus, will contact our school office regarding updates to pick up and drop off times.

If the bus does not yet service your area and you require use of the service, please contact the office or Brent Harper to find out about your nearest pick up point.



KEY INFO

HEALTH

If your child has any allergies (foods, bees, wasps etc) or health/medical conditions (asthmatic, medication etc), please inform school as soon as possible. If children require medication at school, please ensure it is clearly named with the appropriate instructions attached. All medication will be securely stored at school. Parents need to send a letter of authorisation for staff to administer the medication at school.

LUNCHES

Please provide breakfast for your child before they arrive at school and ensure they have a sufficient lunch and snacks for our morning tea and lunch break. We encourage our tamariki to bring healthy food to eat which will help them to concentrate. On Fridays, lunches can be bought from the office. A list of menu items is available at the office or on our website.

BEFORE & AFTER SCHOOL CARE

We have a before and after school care programme that is run in the library by Cherry Van Tiel. The programme runs from 7.30am until 5.30pm. Please contact the office for more details.



KEY INFO

LOST PROPERTY

Please make sure that all your child's clothing and property is clearly named and labelled. Parents are welcome to come onsite at any time, to look through lost property and reclaim items belonging to their children. Items left at the end of each term are disposed of or given to charity. Lost property can be found on the deck or in the library.

PARENTS

We are fortunate to have the wonderful support of many of our parents/caregivers to enable our school to operate. Many parents support and assist teachers and students by helping in classrooms, on working bees, school camps, EOTC (field trips) and sports days. We have an open door and welcoming vibe at our school, so at any time, feel free to pop onsite and say "Hello" to our friendly team and students. If you are in a position to volunteer your time to help with any of our endeavours, please let us know as your help is just what we need!



KEY INFO

HOME LEARNING

Home learning is provided at the discretion of a classroom teacher, and is designed to enhance and support the in-class learning programmes. There are many online platforms that students can access from home to continue their learning journey. Please talk to your child's classroom teacher for more information regarding home learning.

REPORTS

We send home a Mid-Year Report at the end of Term 2 and an End-Of-Year Report at the end of Term 4. These documents should help you understand how your child is progressing in their learning in a variety of curriculum areas throughout the year.

INTERVIEWS

Early in Term 1, we have goal setting interviews where parents meet with their child's classroom teacher to set goals for the year. In the middle of Term 2, we have interviews to unpack the Mid-Year Reports. With the open-door policy at Whitikahu, parents are welcome at any time to book and meet with their child's classroom teacher.

KEY INFO

STATIONERY

Teachers will determine stationery requirements at the commencement of each year. Parents are encouraged to purchase stationery from the school office. Additional supplies can be purchased throughout the year at the office.

LIBRARY

Each class visits the library at least once a week. Junior students are able to issue one book each week (to be taken home in a book bag) and senior students can issue two books. We are fortunate to have a wide range of text genres that students can explore. The library is open at lunch times for students to use.

MUSIC TUTORING

Our students can pay to join private music tutoring during school hours. Carl Watkins from MusiQhub and Malcolm Boyd (drumming) offer lessons for a range of musical instruments or vocals. For more information, contact the office.



KEY INFO

SWIMMING POOL

We are fortunate to have a swimming pool that we use in Terms 1 and 4. Each class has a scheduled time to use the swimming pool for learning skills such as breaststroke, backstroke, freestyle and water safety. Water is heated via solar heating. The pool can be used outside of school hours at the discretion of the BOT and staff. A pool user contract and key is available from the office for \$75.

SCOOTERS & SKATEBOARDS

We encourage aakonga to explore a variety of interests and passions at our school and welcome students to bring their own scooters, skateboards or rollerblades to be used on our courts. Safety gear must be worn at all times and students are responsible for their own property. School accepts no responsibility if personal items are lost or damaged.

EDUCATION OUTSIDE THE CLASSROOM

Throughout the year we organise a variety of excursions outside of the classroom. These trips support and enrich our curriculum and learning programmes. They also provide opportunities for students to develop in CARES.



KEY INFO

DUFFY BOOKS

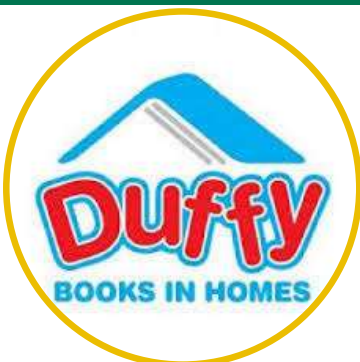
Being a Duffy school opens up a world of opportunities for our students. Duffy schools play a key role in developing a love of books in children and the team at Duffy Books in Homes is always there to assist.

ENGAGEMENT EVENTS

We have a variety of Engagement Events throughout the school year. These events vary in type but provide incredible opportunities for our learners. Some of the events include: Swimming Sports, School Camps, Cross Country, Speeches, Agricultural Day, Athletics, Sports Days, Concerts, Discos, Matariki, Culture Day, Grandparents Day, Open Days, Book Character Days, Charity Fundraisers, House Events etc.

AG DAY

Each year (usually in early October), we hold an annual Ag Day. All students are encouraged to participate in the event. Competitions are held for calves, lambs, goats, and chickens. During Ag Day, we host an arts/crafts competition which enables all students to participate in an event on the day. Once our school Ag Day is complete, winners of the competition progress to Group Day which is usually in mid-October.



ASSOCIATIONS

KAAHUI AKO

Our school is part of the Morrinsville Kaahui Ako which is a Community of Learning, made up of many other schools. The purpose of the Morrinsville Kaahui Ako is to create a community-wide empowering culture of learning dedicated to achieving success for every learner.

EWCS

Whitikahu School is one of the schools in the Eastern Waikato Country Schools (EWCS) Cluster. This enables our learners to participate in EWCS competitions such as Swimming, Cross Country, Hardcourt Sports, Athletics, Technology and Speeches. Children who qualify at school events are selected to attend EWCS events and compete against other schools in our cluster.

WFPSA

The Waikato Full Primary Schools Association was established in 1999 to provide a range of quality sporting, academic and cultural events for Year 7 and 8 students from the full primary schools of the Waikato, King Country and Bay of Plenty to compete in at a regional level.



COMMUNICATIONS

NEWSLETTER

We send out a weekly newsletter pdf via email which has important updates, notices, celebrations, dates, and key information regarding the week that has been and what is coming up in the life of our school.

EMAIL

Important information regarding students, events or updates is usually communicated by School Leadership, Administration, Teachers or other Staff via emails.

Emailing staff is our most common and preferred method of communication at school. Classroom teachers and staff can be contacted via email with any questions, concerns or curiosities that parents or caregivers may have.

Each staff member can be emailed on: firstname.surname@whitikahu.school.nz

SCHOOL APP

The School App functions as a platform for quick alerts to parents and the wider community. It houses our school calendar as well as options for reporting absenteeism.

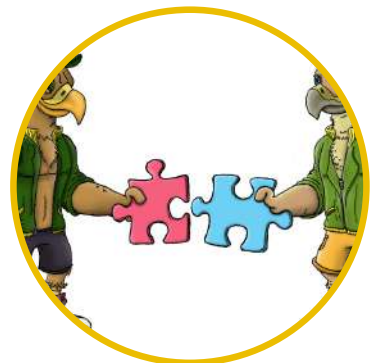
COMMUNICATIONS

WEBSITE

We have a school website that houses important information regarding our school policies, procedures, documents and systems. You can access our website on the following link: <https://www.whitikahu.school.nz/>

FACEBOOK

We post highlight videos, newsletters and important memos on our school Facebook page. We encourage as many parents and community members as possible to like and follow our Facebook page for regular updates regarding the life of our school. You can access our Facebook page on the following link: <https://www.facebook.com/whitikahuschoolpta>



OUR GRADUATE PROFILE



Collaboration

Our graduates are skilled collaborators who are able to work effectively with others to achieve common goals. They are able to communicate their ideas clearly, listen actively, and give or receive feedback constructively. They value diversity and are able to work with people from diverse backgrounds and cultures.



Agency

Our graduates have a strong sense of agency and are able to take ownership of their learning and personal development. They set goals, manage their time effectively, and seek out opportunities to learn and grow. They are able to reflect on their progress and adjust their approach as needed.



Respect

Our graduates show respect for themselves, others, and the environment. They have a strong sense of empathy and are able to understand and appreciate different perspectives. They treat others with kindness and consideration whilst valuing diversity and individuality.



Engagement

Our graduates are engaged and motivated learners who are curious and enthusiastic about learning. They are able to think critically and creatively, solve problems, and make informed decisions. They are open-minded, creative, and willing to take risks.



Self

Our graduates have a strong sense of self and are able to develop positive self-belief. They understand their own strengths and areas of growth, are able to set realistic goals and can work towards achieving them. They have a growth mindset and are able to persist in the face of challenge or difficulty.





Country Learning At Its Best